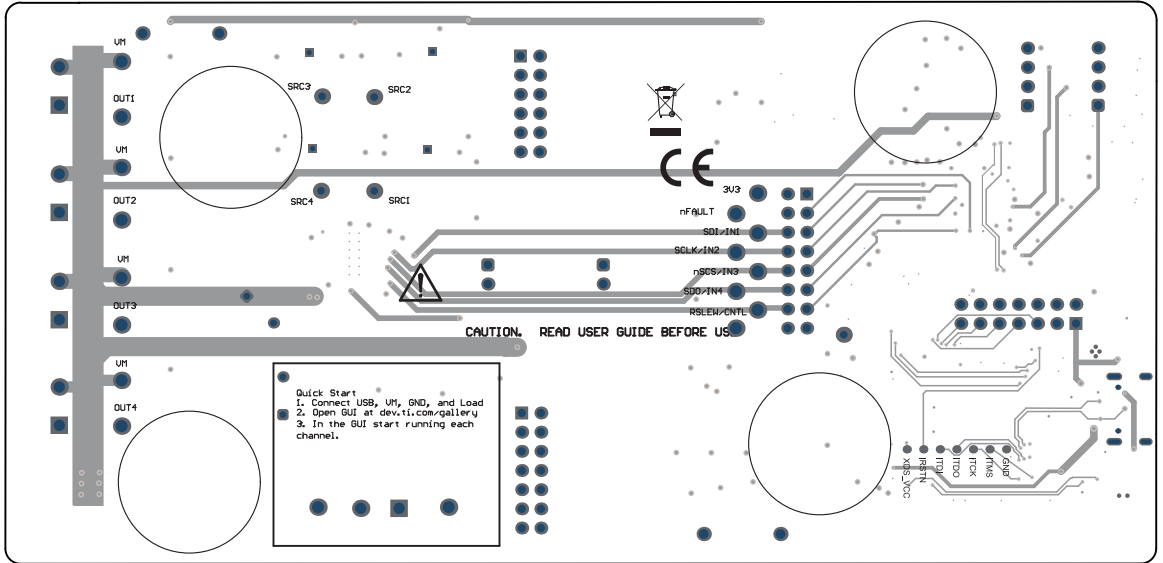


U1

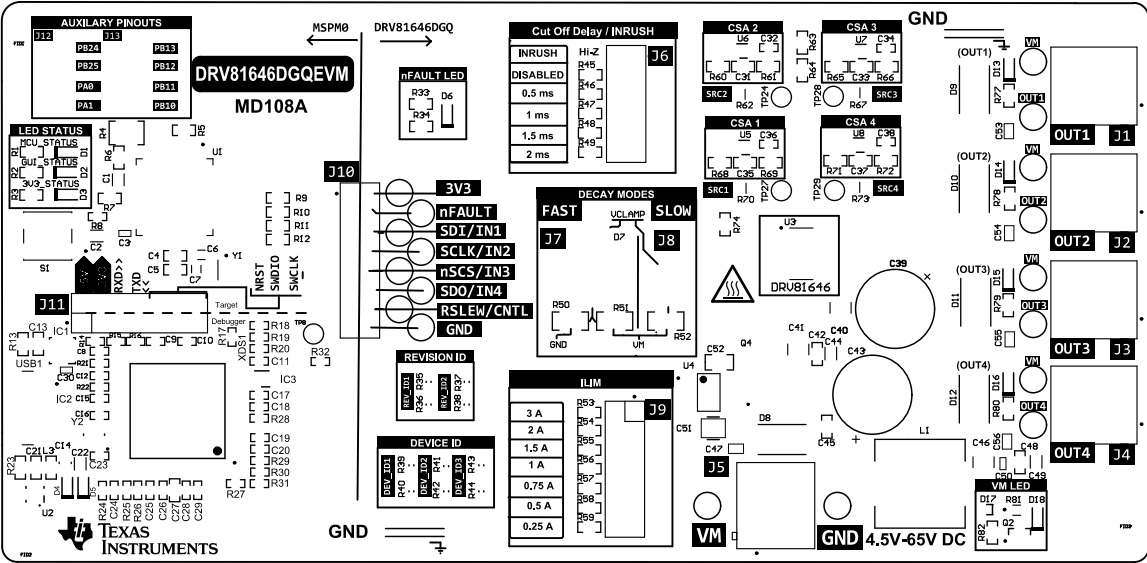
Top Layer Overlay



Logo3

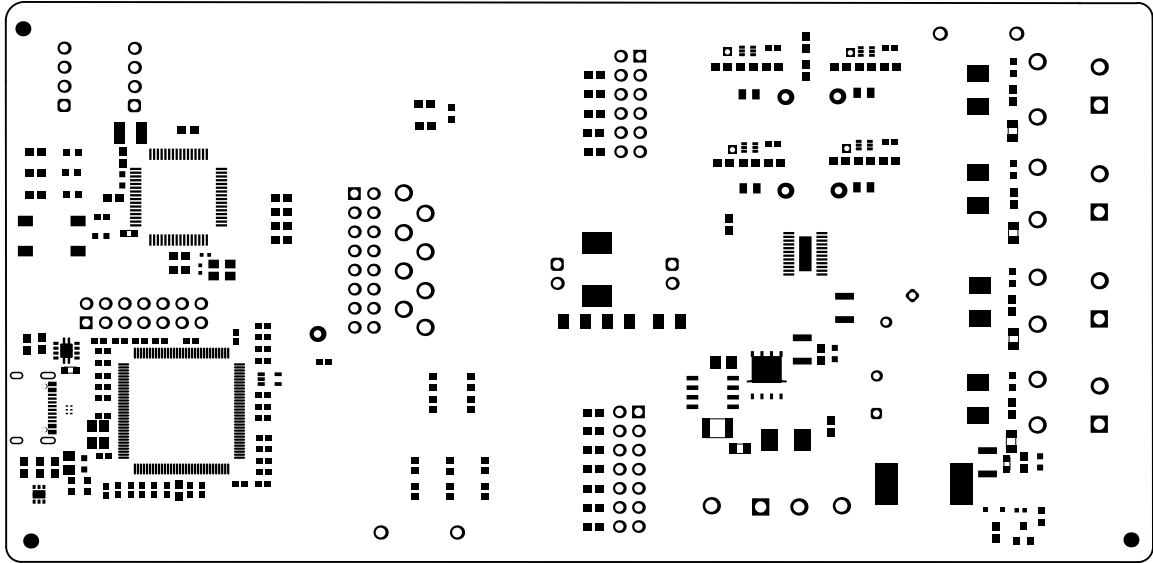
For evaluation only; not FCC approved for resale.

usb408 motor8

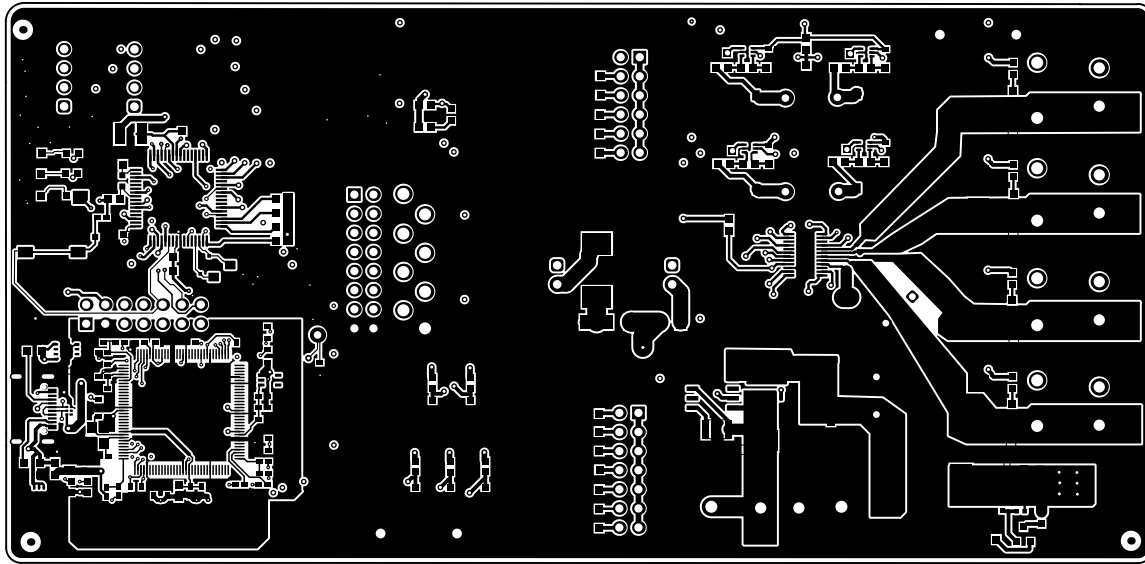


UM

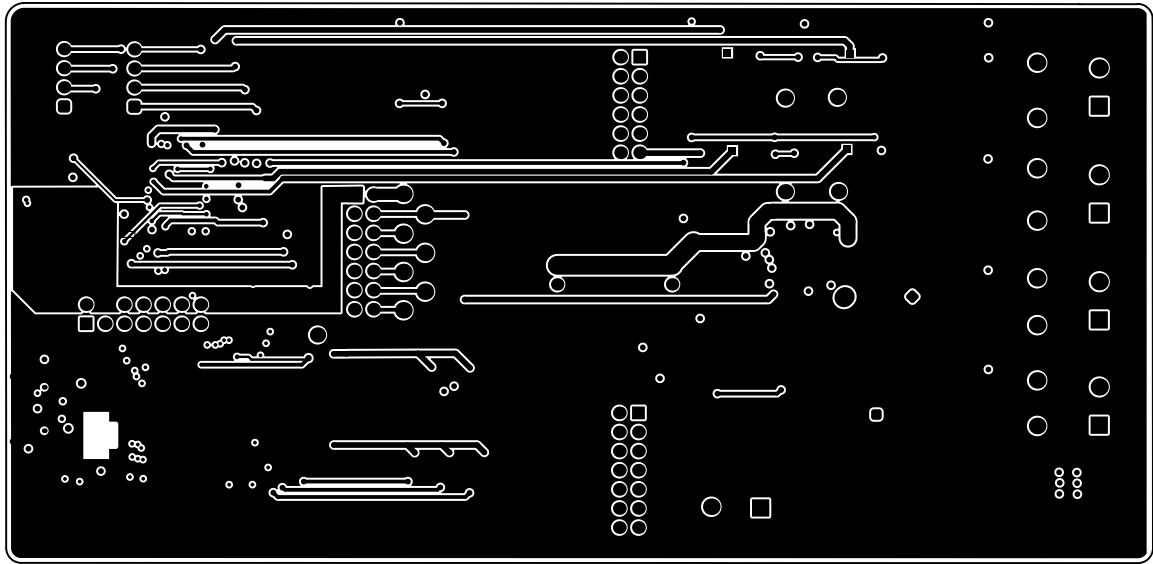
ALL ARTWORK VIEWED FROM TOP SIDE	BOARD #: MD108-001	REV: A	SUN REV: Not in version control
LAYER NAME = Top Overlay	TID #: N/A		
PLOT NAME = Top Overlay	GENERATED : 9/12/2025 2:06:33 PM	TEXAS INSTRUMENTS	



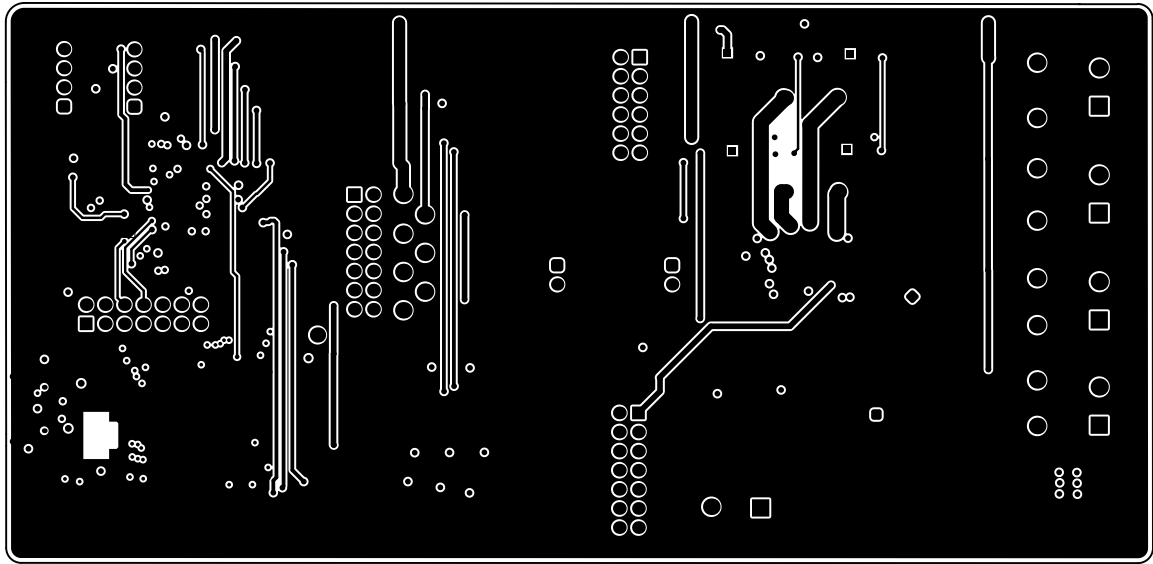
ALL ARTWORK VIEWED FROM TOP SIDE	BOARD #: MD108-001	REV: A	SUN REV: Not in version control
LAYER NAME = Top Solder	TID #: N/A		
PLOT NAME = Top Solder Mask	GENERATED : 9/12/2025 2:06:33 PM	TEXAS INSTRUMENTS	



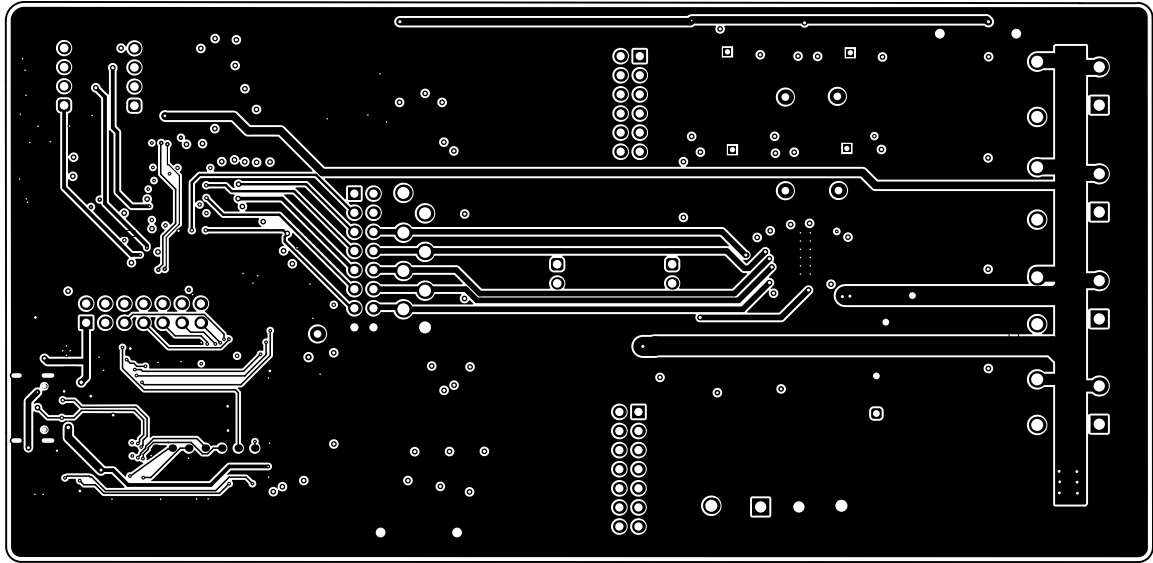
ALL ARTWORK VIEWED FROM TOP SIDE	BOARD #: MD108-001	REV: A	SUN REV: Not in version control
LAYER NAME = Top Layer	TID #: N/A		
PLOT NAME = Top Layer	GENERATED : 9/12/2025 2:06:33 PM	TEXAS INSTRUMENTS	



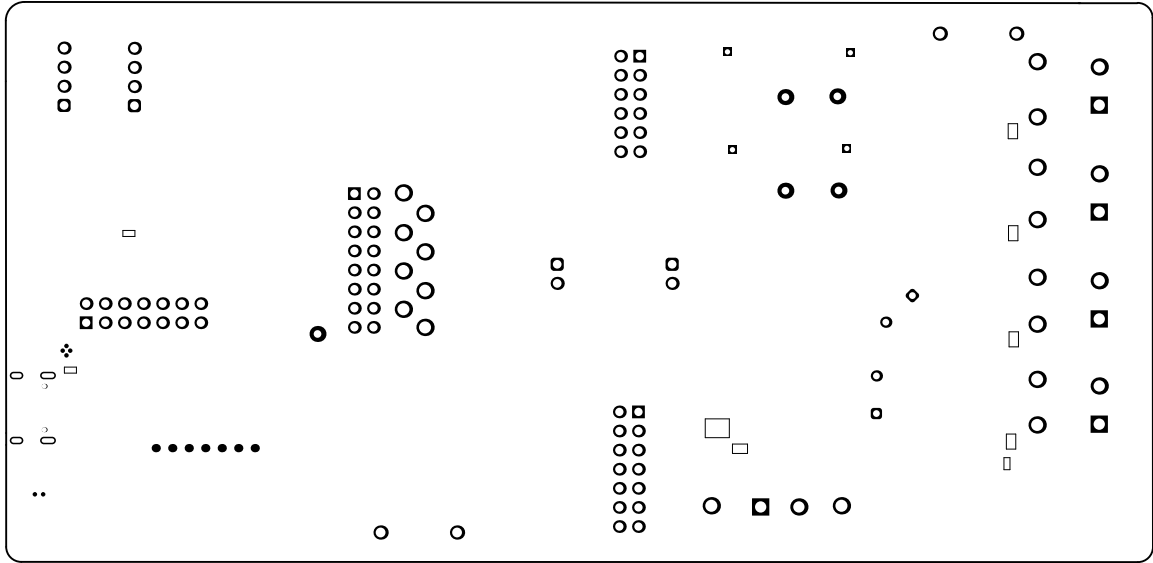
ALL ARTWORK VIEWED FROM TOP SIDE	BOARD #: MD108-001	REV: A	SUN REV: Not in version control
LAYER NAME =	TID #: N/A		
PLOT NAME = Signal 1	GENERATED : 9/12/2025 2:06:33 PM	TEXAS INSTRUMENTS	



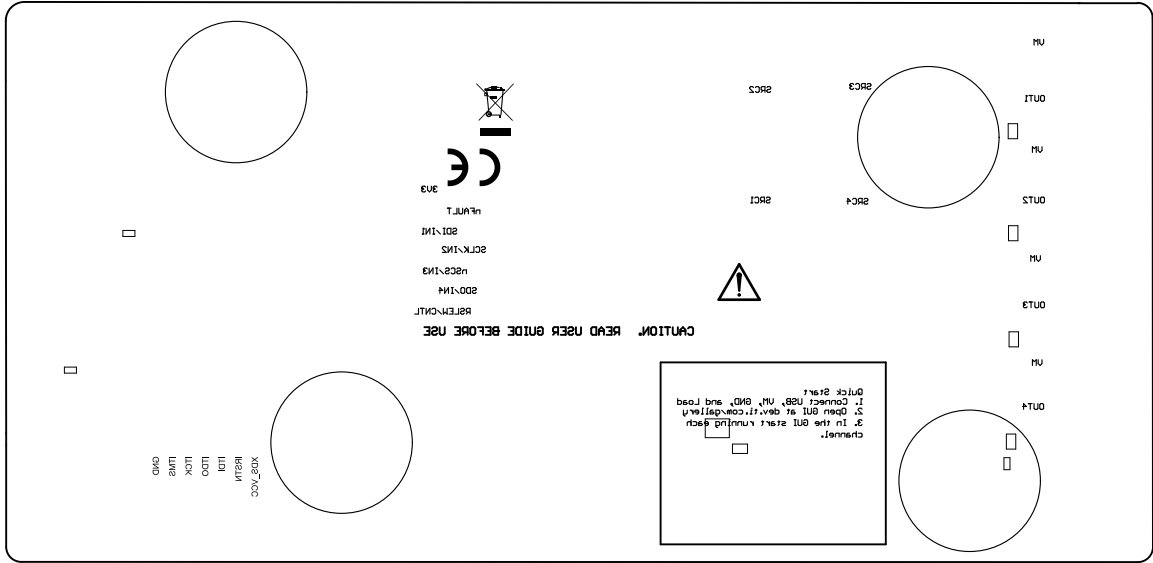
ALL ARTWORK VIEWED FROM TOP SIDE	BOARD #: MD108-001	REV: A	SUN REV: Not in version control
LAYER NAME =	TID #: N/A		
PLOT NAME = Signal 2	GENERATED : 9/12/2025 2:06:34 PM	TEXAS INSTRUMENTS	



ALL ARTWORK VIEWED FROM TOP SIDE	BOARD #: MD108-001	REV: A	SUN REV: Not in version control
LAYER NAME = Bottom Layer	TID #: N/A		
PLOT NAME = Bottom Layer	GENERATED : 9/12/2025 2:06:34 PM	TEXAS INSTRUMENTS	



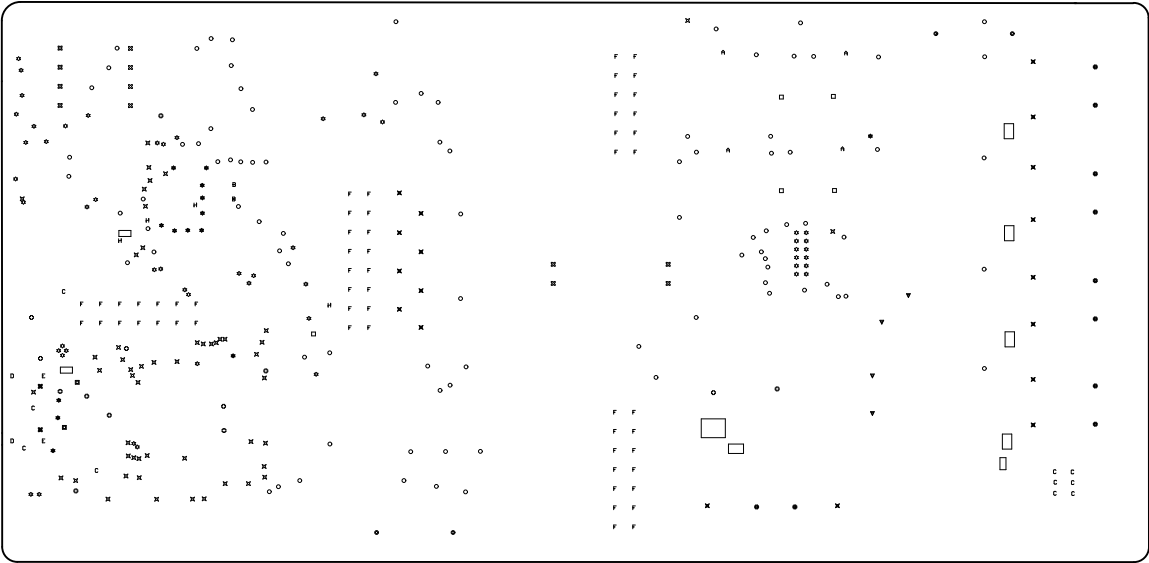
ALL ARTWORK VIEWED FROM TOP SIDE	BOARD #: MD108-001	REV: A	SUN REV: Not in version control
LAYER NAME = Bottom Solder	TID #: N/A		
PLOT NAME = Bottom Solder Mask	GENERATED : 9/12/2025 2:06:34 PM	TEXAS INSTRUMENTS	



For evaluation only: not FCC approved for resale

Logo

ALL ARTWORK VIEWED FROM TOP SIDE	BOARD #: MD108-001	REV: A	SUN REV: Not in version control
LAYER NAME = Bottom Overlay	TID #: N/A		
PLOT NAME = Bottom Overlay	GENERATED : 9/12/2025 2:06:34 PM		TEXAS INSTRUMENTS



Symbol	Count	Hole Size	Plated	Hole Type	Drill Layer Pair	Hole Tolerance
☆	52	0.200mm (7.87mil)	PTH	Round	Top Layer - Bottom Layer	
✕	52	0.203mm (8.00mil)	PTH	Round	Top Layer - Bottom Layer	
H	4	0.300mm (11.81mil)	PTH	Round	Top Layer - Bottom Layer	
★	14	0.305mm (12.00mil)	PTH	Round	Top Layer - Bottom Layer	
⊗	13	0.356mm (14.00mil)	PTH	Round	Top Layer - Bottom Layer	
C	10	0.381mm (15.00mil)	PTH	Round	Top Layer - Bottom Layer	
B	2	0.400mm (15.75mil)	PTH	Round	Top Layer - Bottom Layer	
O	90	0.406mm (16.00mil)	PTH	Round	Top Layer - Bottom Layer	
■	2	0.465mm (18.29mil)	PTH	Round	Top Layer - Bottom Layer	
✕	2	0.650mm (25.59mil)	NPTH	Round	Top Layer - Bottom Layer	
A	4	0.700mm (27.56mil)	PTH	Round	Top Layer - Bottom Layer	
▼	4	0.900mm (35.43mil)	PTH	Round	Top Layer - Bottom Layer	
□	5	1.016mm (40.00mil)	PTH	Round	Top Layer - Bottom Layer	
F	56	1.100mm (43.31mil)	PTH	Round	Top Layer - Bottom Layer	
⊗	12	1.150mm (45.28mil)	PTH	Round	Top Layer - Bottom Layer	
○	4	1.300mm (51.18mil)	PTH	Round	Top Layer - Bottom Layer	
D	2	1.400mm (55.12mil)	PTH	Slot	Top Layer - Bottom Layer	
⊗	10	1.500mm (59.06mil)	PTH	Round	Top Layer - Bottom Layer	
✕	18	1.600mm (63.00mil)	PTH	Round	Top Layer - Bottom Layer	
E	2	1.700mm (66.93mil)	PTH	Slot	Top Layer - Bottom Layer	
	358 Total					

Slot definitions : Routed Path Length = Calculated from tool start centre position to tool end centre position.
Hole Length = Routed Path Length + Tool Size = Slot length as defined in the PCB layout

ALL ARTWORK VIEWED FROM TOP SIDE	BOARD #: MD108-001	REV: A	SUN REV: Not in version control
LAYER NAME = Drill Drawing	TID #: N/A		
PLOT NAME = Drill Drawing	GENERATED : 9/12/2025 2:06:34 PM	TEXAS INSTRUMENTS	



ALL ARTWORK VIEWED FROM TOP SIDE	BOARD #: MD108-001	REV: A	SUN REV: Not in version control
LAYER NAME = M2 Board Dimensions	TID #: N/A		
PLOT NAME = Board Dimensions	GENERATED : 9/12/2025 2:06:34 PM	TEXAS INSTRUMENTS	